

## INSTRUCTIONS FOR AUTHORS OF PAPERS USING MICROSOFT WORD

Wai Kin Victor Chan

Department of Industrial and Systems Engineering  
Rensselaer Polytechnic Institute  
110 8<sup>th</sup> St.  
Troy, NY 12180, USA

Andrea D'Ambrogio

Dipartimento di Ingegneria dell'Impresa  
Università di Roma "Tor Vergata"  
Via del Politecnico, 1  
Roma, I-00133, ITALY

Gregory Zacharewicz

University de Bordeaux - Bat A31  
Laboratoire IMS UMR CNRS 5218  
351 Cours de la Libération, 33405 Talence cedex,  
France

Navonil Mustafee

The Business School  
University of Exeter  
Streatham Court, Rennes Drive  
Exeter EX4 4ST, UK

### ABSTRACT

This set of instructions for producing a proceedings paper for the 2017 Winter Simulation Conference (WSC) with Microsoft Word also serves as a sample file that you can edit to produce your submission, and a checklist to ensure that your submission meets the WSC 2017 requirements. Please follow the guidelines herein when preparing your paper. Failure to do so may result in a paper being rejected, returned for appropriate revision, or edited without your knowledge.

### 1 INTRODUCTION

This paper provides instructions for the preparation of papers for the 2017 Winter Simulation Conference (WSC) with Microsoft Word. There is a companion paper that provides instructions for the preparation of papers using LaTeX. **The easiest way to write a paper using Microsoft Word that complies with the requirements is to use the `wsc16word.dotx` template file.** Do not use an older version, as some specification may have changed.

An author kit is available via [conference website](#) (WSC BoD 2017). The author kit includes this Microsoft Word document and its LaTeX companion. It also includes guidelines that you may find helpful for writing a conference paper and for giving a presentation.

When preparing your paper in Word, you are required to use the Word template, `wsc17word.dotx`. The easiest way to use this template is to simply copy the template to your working directory and double-click the template from your operating system. This will launch Word and will create a new document based on the template. Alternatively, copy the template into the directory containing Word's default templates. The default template directory depends on the operating system. Find the default template directory by searching for one of the default templates (for example, `normal.dot`). Then place the new template in that directory. To access the template, you should open a new Word document by clicking on Office button, selecting New from the menu; and selecting "Installed Templates" from the options listed under templates on the left in the "New Documents" window that appears (Shift key + underlined letter can be used to select the option; in this case pressing shift and N keys together will open the "New Documents" window).

A set of styles are defined in the template so that authors can easily achieve the required format. You should look carefully at how the styles are applied in this document. One simple way to get started with styles is to start with the sample paper and simply replace the existing text. Do not try to make “manual” formatting changes to the text—let styles do the work. For example, instead of manually indenting paragraphs to conform to the WSC 2017 specifications, simply apply the corresponding predefined style from Table 1; the paper will then meet indenting requirements. To view the styles defined in wsc17word.dotx, open the Styles Panel by clicking the bottom right corner arrow button in the “Styles” group on the “Home” ribbon in MS Word 2010 (please use MS Word help to identify corresponding capabilities in other versions). The Styles panel also shows the style currently applied to the text at the current cursor position as the boxed style in the list. To apply different formatting, choose the appropriate style from the list. The specific formatting instructions for a style may be viewed by placing the cursor over the style of interest. For additional help with styles, review the Word Help topic “Style basics in Word.” Avoid updating the styles that are provided; the proceedings editors have checked that the formatting provided by the styles is that needed for the WSC.

Table 1: Defined Word styles.

<b>Style Name</b>	<b>Description</b>
Abstract Heading	Heading style for Abstract
Appendices	Appendix heading
Biography	Author Biographies
Equation	Equations
Figure Label	Single-line figure caption
Figure Label Multiline	Multi-line figure caption
Heading	Unnumbered headings – e.g. References, Acknowledgments, Author Biographies, etc.
Heading <i>i</i>	Numbered headings for level <i>i</i> headings
Hyperlink	Hyperlinks
List Bulleted	Bulleted lists
List enum	Numbered lists
Normal	Normal text – no indent – used for first paragraphs after headings
Normal Indent	Normal text – indented – used for all paragraphs following the first for a section.
Program	“in-between” lines in a program listing
ProgramBoth	Single-line program statements
ProgramEnd	Last line in a program listing
ProgramStart	First line in a program listing
Table Label	Single-line table caption
Table Label Multiline	Multi-line table captions
Title	Paper Title

Note that some styles appearing in this paper’s styles set are not found in earlier WSC templates nor in Table 1 because formatting that is added during the normal editing process will appear in the Style Area Panel. The safest way to ensure conformance to formatting requirements is to apply only styles that are listed in Table 1 below and in the wsc16word.dotx template file.

## **2 GENERAL GUIDELINES**

### **2.1 Language**

The paper should be prepared using U.S. English in the interest of consistency across the proceedings. The language can be set in MS Word 2010 via File > Options > Language settings, and selecting “English (United States)” from the drop down menu.

### **2.2 Objectivity**

The content of the paper should be objective and without any appearance of commercialism. In general, comparisons of commercial software should be avoided unless they are central to the topic. If a comparison of commercial software is included, it should be based on objective analysis that includes criteria, description of ranking methodology on each criteria, and the rankings themselves to arrive at the conclusion. If an approach other than a detailed objective analysis is used to select the simulation software used for the study being reported, such as, availability of the software, or the familiarity of the analyst with the software, it should be clearly identified.

### **2.3 Paper Submission**

You will electronically submit the paper in Portable Document Format (.pdf), through the [conference website](#) (WSC BoD 2017). The .pdf file allows automatic counting of pages and ensures that the page limit has been followed. If the paper is accepted, you will electronically submit the word-processor source file (.docx or .doc) for the final version of your paper. The editors may send the file back to you with the request to make changes to conform to conference guidelines. For minor changes, the editors may make the changes themselves. Final .pdf files are generated by the conference proceedings editors.

You will also need to transfer the copyright of your article to the WSC using the copyright transfer form that will be available via the conference website at the appropriate time. *In order for your paper to be published by the WSC, you must complete the transfer of copyright.* When you have successfully transferred the copyright, you will receive a .pdf receipt. Please email a copy of this receipt to [proceedings editors](#).

If you are unable to satisfy these requirements then you should contact the proceedings editors.

### **2.4 Length Constraints**

#### **2.4.1 Length of the Abstract**

The abstract should be at most 150 words. Since abstracts of all papers accepted for publication in the proceedings will also appear in the final program, the length limit of 150 words will be strictly enforced for each abstract. The abstract should consist of a single paragraph, and it should not contain references or mathematical symbols. Do not include a list of keywords. Keywords are not used in WSC proceedings.

#### **2.4.2 Length of the Paper**

The page size in the proceedings must be 8.5 inches by 11 inches (21.6 cm by 27.9 cm). The overall length of the paper should be at least 5 proceedings pages. **Papers should be at most 12 pages**, except for introductory tutorials, advanced tutorials, and panel sessions, for which the limit is 15 pages. Exceeding the page limit will result in rejection for the proceedings.

### **2.4.3 Font Specification and Spacing**

The paper should be set in the Times New Roman font using a 11-point font size. The paper should be single spaced. Do not use other fonts; use of other fonts means the proceedings editors will need to send the paper back to you to change the font.

### **2.4.4 Margins**

The width of the text area is 6.5 inches (16.0 cm). The left and right margins should be 1 inch (2.54 cm) on each page. Except for the first page, the top and bottom margins should be 1 inch (2.54 cm). First page has 1.5 inch margin from the title to the top of the page, and 1 inch bottom margin. In this MS Word template, the header and footer are set to, respectively, 0.69 inch and 0.75 inch for the first page and 0.89 inch and 0.75 inch for all other pages. Authors should *not* change these header and footer settings when preparing a manuscript.

### **2.4.5 Justification**

Headings of sections, subsections, and subsubsections should be left-justified. One-line captions for figures or tables should be centered. A multiline caption for a figure or table should be fully justified. All other text should be fully justified across the page (that is, the text should line up on the right-hand and left-hand sides of the page).

## **2.5 Headings of Sections, Subsections, and Subsubsections**

Section, subsection, and subsubsection headings should appear flush left, set in the bold font style, and numbered as shown in this document. The headings for the Abstract, Acknowledgments, References and Author Biographies sections are not numbered. Section headings should be set in **FULL CAPITALS LIKE THIS PHRASE**, while subsection and subsubsection headings should be **Capitalized in Headline Style like This Phrase**. Lengthy headings should be broken across two or more lines. **Again, these formats should be accomplished using the styles Heading 1, Heading 2, Heading 3, etc.**

### **2.5.1 Paragraphs**

The first paragraph after a heading should not be indented; all other paragraphs should be indented by 0.25 inches. Do not insert additional space between paragraphs.

Programming code should use “Program Start, Program, and Program End” Styles with the following guidelines.

```
class Exponential{
...// Properties of the Exponential
};
```

One-line programs should use the “Program Both” style.

```
Exponential interArrival;
```

### **2.5.2 Footnotes**

**Do not use footnotes;** instead incorporate such material into the text directly or parenthetically.

### 2.5.3 Page Numbers

Do not include page numbers. Page numbers are generated by the proceedings editors once all accepted papers are ordered for the final proceedings.

## 3 FORMATTING THE FIRST PAGE

### 3.1 Running Heads

The running head (provided in the template) in the upper left-hand corner of the first page (which should read *Proceedings of the 2017 Winter Simulation Conference ...*) is left-justified and set in the 11-point italic font style. You do not have to change the content of the first page header; the first page header was set by the proceedings editors in the preparation of this document.

Running heads on the second and subsequent pages should contain the last names of the authors, centered and set in the 11-point italic font style. For example, running heads for papers would appear like *Justme* for papers with one author, or *Justme and Him* for papers with two authors, or *Justme, Him, and Youtoo* for papers with three authors, etc. Separate the last names of the authors with a comma, except for the last author, use “and.” List all authors; do not use *et al.* The author names are listed in the same order as they appear on the title page. This will be the same order when providing the author biographies at the end of the paper. Once on the second page of your document, view the Header and make the appropriate changes.

### 3.2 Title and Authors

Center the title of the paper on the page and set it in bold **FULL CAPITALS** so that the top edge of the title begins 1.5 inches from the top of the page. Multiline titles should have about the same amount of text on each line. There should be 2 blank lines between the title and the authors’ names.

Each author’s name should be capitalized and centered on a new line, with the author’s first name first and no job title or honorific. Insert 1 blank line between the author’s name and address. The organization or institution that the author is affiliated to should be typed first. Next type the complete street address, without abbreviations, followed by the city, standard two-letter state or province abbreviation, postal code, and country. The address should be centered and capitalized, except for the country, which should be set in FULL CAPITALS. For papers with multiple authors, the authors should be listed in order of decreasing contribution, with authors from the same institution grouped together if possible. Different formats for multiple authors are shown as examples in Figures 3-6 at the end of this document. There should be 2 blank lines between the author names and the text of the paper. The authors are provided in a table so adding and deleting columns is done via the table commands. Do not include emails on the first page; emails for authors are provided in the author biographies. Authors with multiple affiliations shall pick the main affiliation for the title page and mention other affiliations in their resume.

## 4 FORMATTING SUBSEQUENT PAGES

Please refer to section 2.4.4 for the correct margins!

### 4.1 Mathematical Expressions in Text and in Displays

Display only the most important equations, and number only the displayed equations that are explicitly referenced in the text. To conserve space, simple mathematical expressions such as  $\bar{Y} = n^{-1} \sum_{i=1}^n Y_i$  may be incorporated into the text. Mathematical expressions that are more complicated or that must be referenced later should be displayed, as in

$$s^2 = \frac{1}{n-1} \sum_{i=1}^n (Y_i - \bar{Y})^2.$$

If a display is referenced in the text, then enclose the equation number in parentheses and place it flush with the right-hand margin of the column. For example, the quadratic equation has the general form

$$ax^2 + bx + c = 0, \quad \text{where } a \neq 0. \quad (1)$$

In the text, each reference to an equation number should also be enclosed in parentheses. For example, the solution to (1) is given in (2) in Appendix A. Note that equation numbers are not automatically generated or referenced.

If the equation is at the end of a sentence, then you should end the equation with a period. If the sentence in question continues beyond the equation, then you should end the equation with the appropriate punctuation—that is, a comma, semicolon, or no punctuation mark.

The equations can be entered using the Equation option available in the Symbols group on the Insert tab in Microsoft Word 2007 or 2010, or using Microsoft Equation Editor in older versions of Microsoft Word. For Microsoft Word 2007 or 2010, the equation capability makes entering equations quite convenient but numbering them requires using tables. Instructions for inserting equation numbers for Microsoft Word 2007 and 2010 are available online at [WordTips](#) (Sharon Parq Associates 2011).

If you are using Microsoft Equation Editor 3.0, then select the “Equation” style on the line where the equation will appear. Then press the TAB key to move the cursor to the center of the column. From Word’s Insert ribbon, select Object in the Text group. In the pull down menu that appears, select Object, and in the Object panel, select type Microsoft Equation 3.0, and type the equation. While in the Equation Editor, you should verify that the font size is at most 11 points. On the Equation Editor’s menu bar, select Size > Define, and set the “Full” font size to 11. Close the Equation Editor. If you want to include the equation number, press the TAB key. This will move the cursor to the right-hand margin; then type the equation number enclosed in parentheses. Insert a blank line after the equation and then return to the “Normal” style to continue a paragraph or “Normal Indent” to start a new paragraph.

If you are using MathType, insert a blank line before the line for the equation. Click the “Insert Display Equation” button on MathType’s Equation Editor menu bar. Before you type the equation, verify that the font size is at most 11 points by choosing Size > Define. After typing the equation, close the MathType Equation Editor, press the TAB key to move the cursor to the right margin, and type the equation number, if any, enclosed in parentheses. For unnumbered equations, MathType users should click the “Insert Display Equation” button.

## 4.2 Displayed Lists

A displayed list is a list that is set off from the text, as opposed to a run-in list that is incorporated into the text. The bulleted list given below provides more information about the format of a displayed list.

- Use standard bullets instead of checks, arrows, etc. for bulleted lists.
- For numbered lists, the labels should not be Arabic numbers enclosed in parentheses because such labels cannot be distinguished from equation numbers.
- You may need to restart the numbering on numbered lists. To do so, right click on the first entry in the list.

Indent the paragraph after the list. Include an empty line before and after the list.

### 4.3 Definitions and Theorems

Definitions, theorems, propositions, etc. should be formatted like a normal paragraph with a boldface heading as shown in the examples below. Number these items separately and sequentially. You may choose to separately number theorems, propositions, corollaries, etc., as opposed to the example below where corollaries and theorems are numbered together. Do not use a period after the definition, theorem, corollary or proposition *number*, but do end the sentence with a period.

**Definition 1** *In colloquial New Zealand English, the term dopey mongrel is used to refer to someone who has exhibited less than stellar intelligence.*

**Theorem 1** *If a proceedings editor from New Zealand accidentally deletes his draft of the author kit shortly after completing it, he would be considered to be a dopey mongrel.*

**Corollary 2** *One of the proceedings editors is a dopey mongrel.*

Indent the paragraph after the definition or theorem. Include an empty line before and after the item.

### 4.4 Figures and Tables

Figures and tables should be centered within the text and should not extend beyond the right and left margins of the paper. Figures and tables can make use of color since the WSC produces electronic proceedings. However, try to select colors that can be differentiated when printing in black and white in consideration of vast majority of people using such printers. Figures and tables are numbered sequentially, but separately, using Arabic numerals. All tables and figures should be explicitly referenced in the text and they should not be placed before they are referenced.

To insert a table, use the usual Table option on the Insert ribbon. To center the table, first select the table, then right click and select Table Properties, followed by the Table tab and click the Center button for Alignment and the None button for Text wrapping. For figures which can fit next to each other, the author can choose to align them next to each other with the figure text centered below each figure and on the same line for both figures. For tables which can fit next to each other, the author can choose to align them next to each other with the table text centered above each table and on the same line for both tables.

Each table should appear in the document after the paragraph in which the table is first referenced. However, if the table is getting split across pages, it is okay to include it after a few paragraphs from its first reference. The table's single-line captions are centered, while multiline captions are left justified. This template **does not** use the Word capabilities to insert table captions and thus does not use the automatic referencing capabilities of Word. Instead add the appropriate caption above the table and use the "Table Label" style for tables with a single-line caption. Use the "Table Label Multiline" style for multiline table captions. The styles include inserting a 12 pt. space above and a 6 pt. space after the caption. The caption should begin with the word Table, followed by the table number and a colon. Captions can be written using normal sentences with full punctuation. All captions should end with a period. It is fine to have multiple-sentence captions that help to explain the table. Include one line space below the table. See Tables 1 and 2 for examples.

Table 1: Table captions appear above the table, and if they are longer than one line they are left justified. Captions are written using normal sentences with full punctuation. It is fine to have multiple-sentence captions that help to explain the table.

Creature	IQ	Diet
dog	70	Anything
cat	75	almost nothing
human	60	ice cream
dolphin	120	fish fillet

Table 2: Counting in Maori.

English	Maori
one	Tahi
two	Rua
three	Toru

Each figure should appear in the document after the paragraph in which the figure is first referenced. However, if the figure is getting split across pages, it is okay to include it after a few paragraphs from its first reference. Figure captions appear below the figure. Single-line captions are centered, while multiline captions are left justified. This template **does not** use the Word capabilities to insert figure captions and thus does not use the automatic referencing capabilities of Word. Instead add the appropriate caption below the figure and use the “Figure Label” style to label the figure for a single-line caption. Use the “Figure Label Multiline” style for multiline captions. The styles include inserting a 6 pt. space above and a 12 pt. space after the caption. Include one line space above the figure. The caption should begin with the word Figure, followed by the figure number and a colon. Captions end with a period. See Figures 1 and 2 for examples.

Paste figures as pictures into the document. To center the figure, select the picture, right-click, and choose Format Picture. From the Layout tab, first check “Center” in Horizontal Alignment section, next select “Advanced” and then select “Top and Bottom” on the “Text Wrapping” tab and click OK. With the picture selected, apply the “Centered” style.

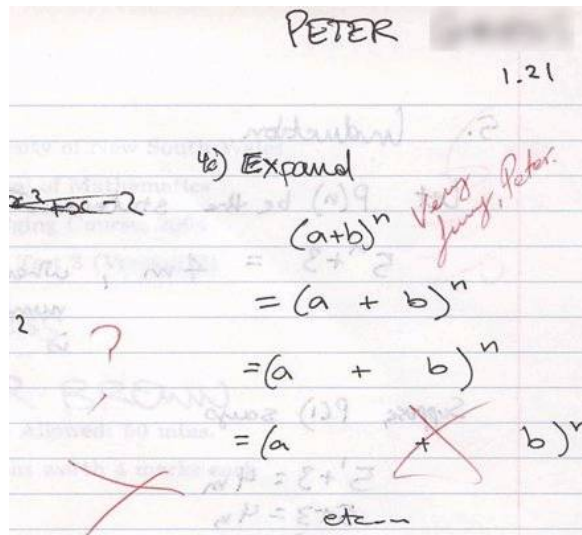


Figure 1: An unusual answer to a question.



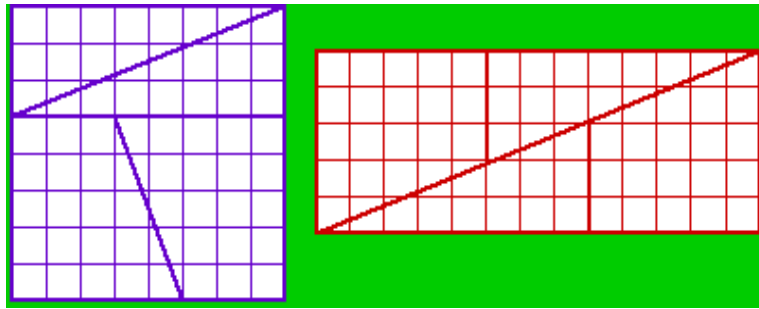


Figure 2: The area of the square is 64 squares, while that of the rectangle is 65 squares, yet they are made of the same pieces! How is this possible?

References to tables and figures identified by number are capitalized. For example, “We see in Table 5 that...” and “We see in the previous table that...” are both correct.

Please ensure that the text within figures uses standard fonts and is readable (Times New Roman, Symbol, etc.).

#### 4.5 Hyperlinks

A *hyperlink* specifies a Web address (URL) or an e-mail address. The use of hyperlinks allows authors to give readers access to external electronic information, such as a dynamic simulation or animation. **While the use of hyperlinked text is encouraged in the main body of the paper, it is recommended that corresponding web addresses and other identifying information should be provided in list of references.** For example, instead of spelling out the web address of the conference website, one would refer to [conference website](#) and the corresponding entry in the reference section will spell out the associated web address and other relevant information such as author(s) and/or organization that published the content. This would allow readers to search for the content using the author(s), organization, etc. in case the actual web-address is changed. This also allows for a cleaner appearance of the main body of the paper.

If the author(s) feels that enough information is provided in the main body of the paper that can be used for searching for the cited content if the web address is changed and that the inclusion of the web address doesn’t hurt the appearance of the paper, the web address can be included in the main body of the paper itself.

Each hyperlink should be set in the same font as the text. A live hyperlink (or hot link)—that is, a hyperlink that will activate your Web browser and take it to an external Web site or that will activate your e-mail software for sending a message to a specific e-mail address—should be colored blue. You can see examples of such hyperlinks in this paper. The use of live hyperlinks is at the discretion of the author(s).

Using live hyperlinks requires the format defined in the “Hyperlink” style. To insert a live hyperlink into a WSC paper, please follow the following steps:

1. In the current paragraph style, enter the text where the live hyperlink is to appear.
2. Select the displayed text of the live hyperlink and apply the “Hyperlink” style.
3. With the displayed text selected, choose Insert > Hyperlink from the ribbon or right-click and select “Hyperlink.”
4. In the dialog box that appears, select the button labeled “E\_xisting File or Web Page” or “E\_m\_ail address.”
5. In the second box labeled “Address” type only the correct e-mail or Web address, with the prefix `http://` for a Web address.

6. For hyperlinks with web addresses, enter an appropriate citation following the text and provide the web address and other relevant information in the corresponding entry in the list of references.

If it is necessary to break the displayed text of the e-mail or Web address across two or more lines, then a soft return (SHIFT+ENTER) may be used to insert line breaks in the displayed text of the live hyperlink (as opposed to being inserted in the “Address” box referred to above). These soft returns should be added to the displayed text *prior* to step 3.

If *any* editing is made to the displayed text of a live hyperlink, then the “Address” box referred to above should be rechecked to ensure no extraneous characters have been introduced into that box. To check the “Address” box for accuracy, place the cursor anywhere in the displayed text of the hyperlink and right-click. Select “Edit Hyperlink.” If extraneous characters have been introduced, delete them from the “Address” box.

Non-live hyperlinks—that is, the hyperlinks that are included for the reader’s information but do not actually invoke the reader’s Web browser or e-mail software should be colored black.

If the authors use hyperlinked text in the main body of the paper, they must ensure that each hyperlink includes a citation (e.g. (WSC BoD 2017) following the hyperlinked text “[conference website](#)” in Section 1), a corresponding entry is provided in the list of references, and the associated web address displayed for the hyperlink is complete and correct so that a reader who has only a hard copy of the paper can still access the cited material by typing the relevant part of the displayed text of the hyperlink into the address bar of a Web browser. If the authors opt for including the web address in the main body of the text itself, they must ensure that the hyperlink is complete and correct for the same reason. This is especially important since WSC papers are filed in the IEEE Xplore digital library which does not allow hyperlinks, so for that purpose the hyperlinks are removed. The hyperlinks still appear in the CD of the proceedings and in other repositories.

#### 4.6 Citing a Reference

To cite a reference in the text, use the author-date method. Thus, Chien (1989) could also be cited parenthetically (Chien 1989). For a work by **four or more authors**, use an abbreviated form. For example, a work by Banks, Carson, Nelson and Nicol would be cited in one of the following ways: Banks et al. (2000) or (Banks et al. 2000).

Parenthetical citations are enclosed in parentheses ( ), not square brackets [ ]. The items in a series of such citations are usually separated by commas. If an item in the series of parenthetical citations contains punctuation because (for example) it refers to a work with three or more coauthors, then all items must be separated by semicolons.

The following is a list of **correct** forms of citations:

- Brown and Edwards (1993),
- (Brown and Edwards 1993),
- (Smith 1987, Brown and Edwards 1993), and
- (Smith 1987; Arnold, Brown, and Edwards 1992; Brown et al. 1995).

The following is a list of **incorrect** forms of citations:

- Brown and Edwards [1993],
- (Brown and Edwards, 1993),
- (Smith, 1987; Brown and Edwards, 1993), and
- (Smith 1987, Arnold Brown and Edwards 1992, Brown et al. 1995)

For further details, please refer to Chicago Manual of Style (The University of Chicago Press 2010). The proceedings editors have also provided an EndNote style file to assist with proper formatting. (The use of EndNote is *not* required.)

#### **4.7 List of References**

Place the list of references after the appendices. The section heading is **REFERENCES**, and is not numbered. List only references that are cited in the text. Arrange the references in alphabetical order (chronologically for a particular author or group of authors); do not number the references. Give complete references without abbreviations. To identify multiple references by the same authors and year, append a lower case letter to the year of publication, for example, 1984a and 1984b.

Use hanging indentation to distinguish individual entries. Do not insert additional space between references. The bibliographic style for a journal article is:

<Surname of first author>, <Author's initial(s)>, <Initials and surnames of other authors>. <year>. <Capitalized article title in quotes>. <*Journal Name in Headline Italics*> <Volume number>:<page numbers>.

The format for other types of reference can be inferred from the examples in the references section, which include:

- a technical report (Chien 1989),
- a proceedings article (Cheng 1994),
- a journal article (Gupta, Nagel, and Panchapakesan 1973),
- a book by 2 authors (Hammersley and Handscomb 1964),
- a chapter in a book (Schruben 1979),
- an unpublished thesis or dissertation (Steiger 1999),
- a book with no identified authors (The University of Chicago Press 2010), and
- a document available on the web (WSC Foundation 2011).

Be sure that references to past WSC proceedings, such as (Cheng 1994) include the necessary information such as *Proceedings of the 1994 Winter Simulation Conference*, following by the list of editors, then the page number range for the paper and finally the publisher information, Piscataway, New Jersey: Institute of Electrical and Electronics Engineers, Inc.

Again, for further details and examples, please refer to Chicago Manual of Style (The University of Chicago Press 2010). Please note that the examples given in the reference section of this document are based on the 16<sup>th</sup> edition of the Chicago Manual of Style. Authors can use the style based on the 15<sup>th</sup> edition of the manual that they have been using in the papers for the past Winter Simulation Conferences at their discretion. However, the two styles should not be mixed. Clarity and consistency should be your primary concern. The proceedings editors have provided an EndNote style file to assist with proper formatting. (The use of EndNote is *not* required.)

## **5 AUTHOR CHECKLIST**

We strive for a consistent appearance in all papers published in the proceedings. If you used the template and styles within this author's kit, then almost all of the requirements in this checklist will be automatically satisfied, and there is very little to check.

Please **print a hardcopy of your paper**, and go over your printed paper to make sure it adheres to the following requirements. *Thank you!*

1. Abstract
  - (a) 150 or fewer words.

- (b) No list of keywords.
- 2. Paper Length
  - (a) At least 5, but no more than 12 pages (15 pages for papers in the introductory and advanced tutorial tracks and for panels).
  - (b) Page size is letter size (8.5" x 11", or 216 mm x 279 mm).
- 3. All text is in 11-Point Times New Roman.
- 4. The paper has been spellchecked using U.S. English.
- 5. Spacing and Margins
  - (a) Single spaced.
  - (b) Left and right margins are each 1 inch.
  - (c) Top and bottom margins are each 1 inch except first page.
  - (d) First page has 1.5 inch margin from the title to the top of the page, and 1 inch bottom margin.
- 6. Section Headings
  - (a) Left justified and set in **BOLDFACE ALL CAPS**.
  - (b) Numbered, except for the abstract, acknowledgments, references and author biographies.
  - (c) Subsection headings are set in Headline Style.
- 7. No footnotes or page numbers.
- 8. The running head on the first page is as given in the template file, and the running head on subsequent pages is the surnames of all authors.
- 9. The title is in **11 POINT BOLDFACE ALL CAPS**
- 10. Multiple authors are formatted correctly, with email addresses and other information in the Author Biography section.
- 11. Equations are centered and any equation numbers are in parentheses and right-justified.
- 12. Figures and Tables
  - (a) All text in figures and tables is readable.
  - (b) Table captions appear above the table. Figure captions appear below the figure.
- 13. Citations and References
  - (a) Citations are by author and year, and are enclosed in parentheses, not brackets.
  - (b) References are in the hangref style, and are listed alphabetically by the last names(s) of the author(s).
- 14. Author biographies are one paragraph per author.
- 15. Hyperlinks
  - (a) Hyperlinks will work as of the date of December 2017.
  - (b) Live hyperlinks are blue. Nonlive hyperlinks are black.

After verifying that your paper meets these requirements, please go to the final submission page at [conference website](#) (WSC BoD 2017) and submit your paper. Be sure to complete the transfer of copyright and email a copy of your .pdf receipt to proceedings editors. Thank you for contributing to the WSC!

## **ACKNOWLEDGMENTS**

Place the acknowledgments section, if needed, after the main text, but before any appendices and the references. The section heading is not numbered. These instructions are adapted from instructions that have been iteratively updated and improved by proceedings editors and several other individuals, who are too numerous to name separately, since the first set of instructions were written by Barry Nelson for the 1991 WSC.

## **A APPENDICES**

Place any appendices after the acknowledgments and label them **A**, **B**, **C**, and so forth.

The solution to (1) has the form

$$x = \frac{-b \pm \sqrt{b^2 - 4ac}}{2a} \quad a \neq 0. \quad (2)$$

## **B GETTING HELP**

If you need help in preparing your paper, contact the proceedings editors. You can reach the entire team by writing to our unified point of contact at [wsc17proceedings@gmail.com](mailto:wsc17proceedings@gmail.com). You may also reach us individually using the contact information below:

W. K. Victor Chan  
Rensselaer Polytechnic Institute  
E-Mail: [wsc17chan@gmail.com](mailto:wsc17chan@gmail.com)

Andrea D'Ambrogio  
Università di Roma "Tor Vergata"  
E-Mail: [wsc17dambrogio@gmail.com](mailto:wsc17dambrogio@gmail.com)

Gregory Zacharewicz  
University de Bordeaux - Bat A31  
E-Mail: [wsc17zacharewicz@gmail.com](mailto:wsc17zacharewicz@gmail.com)

Navonil Mustafee  
University of Exeter  
E-Mail: [wsc17mustafee@gmail.com](mailto:wsc17mustafee@gmail.com)

## C MOST OBSERVED MISTAKES

The following list comprises the most common sources of error that had to be corrected by previous editors. Please make sure to go through the following list and check that your paper is formatted correctly:

1. The paper can be at most 12 pages long (15 for tutorials and panel sessions). Longer papers cannot be published.
2. Paper title and section titles are in ALL CAPS, subsections capitalize the first letter of important words. Please use the templates to use correct indents and spaces.
3. Paper is letter format, not DIN A4 format. Please use the required margins (different on page 1 from the following pages).
4. Use the correct running heads! Use the proceedings editors and chairs on page one, and use the last names separated by commas for the other pages. Don't forget that the last Last Name is preceded by “, and ”. Make sure the margins are correct on the running heads.
5. Double check the citation format!
6. Don't forget the “author biographies” section!
7. Double-check that figures and tables are referenced in the text and have the correct caption format!
8. Double check that the author section after the title is formatted correctly: the number of organizations defines the number of blocks, the number of blocks defines the layout.
9. In the heading on the title page, country names should be in ALL CAPS.
10. The first line of each paragraph is indented, with the exception of the first paragraph of a section or subsection.
11. There should be extra lines before and after enumerations, lists, definitions, etc.

## REFERENCES

- Banks, J., J. S. Carson, B. L. Nelson, and D. M. Nicol. 2000. *Discrete-Event System Simulation*. 3rd ed. Upper Saddle River, New Jersey: Prentice-Hall, Inc.
- Cheng, R. C. H. 1994. “Selecting Input Models”. In *Proceedings of the 1994 Winter Simulation Conference*, edited by J. D. Tew, S. Manivannan, D. A. Sadowski, and A. F. Seila, 184–191. Piscataway, New Jersey: Institute of Electrical and Electronics Engineers, Inc.
- Chien, C. 1989. “Small Sample Theory for Steady State Confidence Intervals”. Technical Report No. 37, Department of Operations Research, Stanford University, Stanford, California.
- Gupta, S. S., K. Nagel, and S. Panchapakesan. 1973. “On the Order Statistics from Equally Correlated Normal Random Variables”. *Biometrika* 60:403–413.
- Hammersley, J. M., and D. C. Handscomb. 1964. *Monte Carlo Methods*. London: Methuen.
- Law, A. M., and W. D. Kelton. 2000. *Simulation Modeling & Analysis*. 3rd ed. New York: McGraw-Hill, Inc.
- Schruben, L. W. 1979. “Designing Correlation Induction Strategies for Simulation Experiments”. In *Current Issues in Computer Simulation*, edited by N. R. Adam and A. Dogramaci, 235–256. New York: Academic Press.
- Sharon Parq Associates. 2011. WordTips: Numbering Equations. [http://word.tips.net/Pages/T000273\\_Numbering\\_Equations.html](http://word.tips.net/Pages/T000273_Numbering_Equations.html).
- Steiger, N. M. 1999. “Improved Batching for Confidence Interval Construction in Steady-State Simulation”. Ph.D. thesis, Department of Industrial Engineering, North Carolina State University, Raleigh, North Carolina. <http://www.lib.ncsu.edu/resolver/1840.16/4713>.
- The University of Chicago Press. 2010. *The Chicago Manual of Style*. 16th ed. Chicago: The University of Chicago Press. <http://www.chicagomanualofstyle.org>.

WSC BoD (Winter Simulation Conference Board of Directors) 2017. “Winter Simulation Conference”.  
<http://www.wintersim.org>.

## **AUTHOR BIOGRAPHIES**

**WAI KIN (VICTOR) CHAN** is an Associate Professor of the Department of Industrial and Systems Engineering at the Rensselaer Polytechnic Institute, Troy, NY. He holds a Ph.D. in industrial engineering and operations research from University of California, Berkeley. His research interests include discrete-event simulation, agent-based simulation, and their applications in social networks, service systems, transportation, energy markets, and manufacturing. His e-mail address is [wsc17chan@gmail.com](mailto:wsc17chan@gmail.com).

**ANDREA D’AMBROGIO** is Associate Professor of systems and software engineering at the University of Roma Tor Vergata (Italy) and director of the post graduate Master degree in Systems Engineering. His research interests are in the fields of discrete event simulation, distributed and web-based simulation, engineering and validation of systems, software and processes, model-driven engineering and business process modeling and analysis. His e-mail address is [wsc17dambrogio@gmail.com](mailto:wsc17dambrogio@gmail.com).

**GREGORY ZACHAREWICZ** is Associate Professor HDR at the University of Bordeaux (France). His research interests include discrete event M&S, distributed simulation (HLA), model driven approaches, semantics aspects (short-lived ontology), and enterprise modeling (workflow, BPM, and ERP). He focused recently on Social-Organizational M&S and Interoperability. He is involved in several M&S conferences and journals. He has been participating in a number of French, European and transatlantic M&S projects. His email address is [wsc17zacharewicz@gmail.com](mailto:wsc17zacharewicz@gmail.com).

**NAVONIL MUSTAFEE** is a Senior Lecturer in the Management studies department at the University of Exeter Business School, UK. He holds a Ph.D. in distributed computing and simulation from Brunel University, UK. His research interests include hybrid systems modelling, modelling methodologies, hybrid simulation, healthcare simulation and bibliometric analysis. His email address is [wsc17mustafee@gmail.com](mailto:wsc17mustafee@gmail.com).

*LastName1, LastName2, and LastNameLastAuthor*

First Name Last Name 1  
First Name Last Name 2

Institution  
Street Address 1  
Street Address 2  
City, ST Zip, COUNTRY

Figure 3: Example title page heading with 2 authors from the same institution.

First Name Last Name 1

First Name Last Name 2

Institution  
Street Address 1  
Street Address 2  
City, ST Zip, COUNTRY

Institution  
Street Address 1  
Street Address 2  
City, ST Zip, COUNTRY

Figure 4: Example title page heading with 2 authors from different institutions.

First Name Last Name 1

First Name Last Name 2

Institution  
Street Address 1  
Street Address 2  
City, ST Zip, COUNTRY

Institution  
Street Address 1  
Street Address 2  
City, ST Zip, COUNTRY

First Name Last Name 3

Institution  
Street Address 1  
Street Address 2  
City, ST Zip, COUNTRY

Figure 5: Example title page heading with 3 authors from different institutions.



*LastName1, LastName2, and LastNameLastAuthor*

First Name Last Name 1

Institution  
Street Address 1  
Street Address 2  
City, ST Zip, COUNTRY

First Name Last Name 2

Institution  
Street Address 1  
Street Address 2  
City, ST Zip, COUNTRY

First Name Last Name 3

Institution  
Street Address 1  
Street Address 2  
City, ST Zip, COUNTRY

First Name Last Name 4

Institution  
Street Address 1  
Street Address 2  
City, ST Zip, COUNTRY

Figure 6: Example title page heading with 4 authors from 4 different institutions.

First Name Last Name 1  
First Name Last Name 2

Institution  
Street Address 1  
Street Address 2  
City, ST Zip, COUNTRY

First Name Last Name 3

Institution  
Street Address 1  
Street Address 2  
City, ST Zip, COUNTRY

Figure 7: Example title page heading with 3 authors from 2 different institutions.